

RETAILER: This framesheet MUST BE provided to the end user.

So you bought a Dropout... Nice! Congrats on that, and thanks a bunch. Here are a few things you should know about your new ride, presented to you in bulleted format, but without the bullets.

Save your receipt. Without original receipt we cannot accept any warranty claims.

The entire bike is E.D. coated inside and out. That black coating inside the tubes, that's kickass rustproofing bro. No need to Frame-Saver this one.

You should however make sure to chase the bottom bracket threads to ensure smooth installation.

To install brakes on this hog, follow the brake installation instructions below. If you need replacement brake studs, we spec the Fly Bikes brake studs, so get yourself some of those.

If you're going to run a front brake and want to barspin, you should setup your brakes before cutting the steerer tube. If you cut you're steerer too short the brake lever won't clear the toptube.

We have included a compression plug which will allow you to barspin with a front brake, but feel free to use the starnut that is included with your headset. It will work fine.

If you're running your wheel toward the front of the dropout we recommend that you remove the tensioner screws. When they stick out far and you're getting rad, it's possible for them to get bent. If you need replacement tension screws the specs are: M4 x 0.8 x 40mm full thread.

Enjoy the bike and feel free to send over some pics of your ride for our blog.

Cheers,

All-City

⚠ WARNING: CYCLING CAN BE DANGEROUS. BICYCLE PRODUCTS SHOULD BE INSTALLED AND SERVICED BY A PROFESSIONAL MECHANIC. NEVER MODIFY YOUR BICYCLE OR ACCESSORIES. READ AND FOLLOW ALL PRODUCT INSTRUCTIONS AND WARNINGS INCLUDING INFORMATION ON THE MANUFACTURER'S WEBSITE. INSPECT YOUR BICYCLE BEFORE EVERY RIDE. ALWAYS WEAR A HELMET.

Additional Product and Safety Information can be found at the website: www.allcitycycles.com/safety.

⚠ WARNING: All-City does not recommend riding without front and/or rear braking mechanisms. Please follow brake manufacturer's instructions.

NOTE: The bike was not designed for pegs, use of pegs voids your warranty.

Intended Use

General Purpose Riding

CONDITION 2

Bikes are designed for riding Condition 1, plus smooth gravel roads and improved trails with moderate grades where the tires do not lose ground contact.



INTENDED For paved roads, gravel or dirt roads that are in good condition, and bike paths.

NOT INTENDED For off-road or mountain bike use, or for any kind of jumping. Some of these bikes have suspension features, but these features are designed to add comfort, not off road capability. Some come with relatively wide tires that are well suited to gravel or dirt paths. Some come with relatively narrow tires that are best suited to faster riding on pavement. If you ride on gravel or dirt paths, carry heavier loads or want more durability talk to your dealer about wider tires.

MAXIMUM WEIGHT LIMIT (lb/kg)	Rider	Luggage*	Total
	300/136	30/14	330/150
For Touring or Trekking	300/136	55/25	355/161

*Seat Bag/Handlebar Bag Only

Frameset Compatibility

Tubing	100% full 4130 CroMoly steel. Double-budded down, top, and seat tubes. Top and downtube gussets at the headtube
Fork	Fully heat-treated 4130 CroMoly tapered fork blades and steerer tube, custom fork ends with integrated lawyer tabs.
Dropouts	Investment cast stainless steel All-City Hennepin Bridge dropouts, with built in tensioner bolts. The bolts are a standard M4 bolt, and we recommend that if you're running the rear wheel fully forward in the dropout that you either take the bolts out or replace them with a shorter version to prevent bending. We also recommend that you grease those things.
Rear spacing	120mm
Seatpost diameter	27.2mm
Seatpost clamp diameter	30.0mm
Headset	Campy 45/45° internal
Bottom bracket shell	68mm wide, threaded English 1.37 x 24t
Brake mounts	BMX U Brake
Tire clearance	700c x 38mm in the back, 47mm in the front
Max Chainring Size	44t

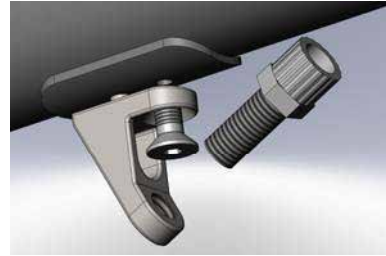
NOTE: Paul Racer and Racer M brakes will not work on your Dropout frameset.

For complete bike specs and reasoning behind our component choices go to www.allcitycycles.com.



Brake Cable Guide Installation

1. To mount the cable guides you will need a 2.5 Allen-type wrench. Make sure the barrel adjuster has been removed from the cable stop.
2. Put some lube on the threads of the M4 mounting bolt before you install your cable guide. This helps to get a tight fit, and makes it easier to remove the bolt later. Also, put a bit of lube on the barrel adjuster threads.
3. Before threading the brake studs into their mounts, make sure the threads of the stud do not have excessive thread locking compound on them. The ED coat on our frames, along with dry thread locker can make it hard to thread these studs in. You should clean the threads a bit before you thread them. An awl, triangle file, sharpened spoke or a thread file all work well. If you can clamp the stud in an axle vise, this helps.
4. Once your stud is prepped for installation, you will need a 4mm Allen-type wrench. Apply some thread locking compound (Blue Loctite 242 is the best) and install the studs while it's still wet. This will allow the studs to thread in easily, and keep them from backing out while setting up your brakes.
5. Install your BMX style U-brakes per the manufacturer instructions.



Care and Maintenance

Keep your frame clean. Dirt and road grime lead to oxidation and fading of the finish, and they make it hard to do a thorough inspection. Dirt will accelerate any abrasion of the paint that comes from rubbing, such as places where the cable housing touches the frame. In extreme cases, this type of abrasion could remove frame material.

When your bicycle is not being ridden, store it where it will be protected from rain, snow, sun, etc. Rain or snow may cause the metal on your frame to corrode.

If your bicycle was exposed to moisture during a ride, thoroughly dry the bicycle before storing it. If water got inside the frame, tilt the bicycle to drain the water. If necessary, remove the seatpost and turn the bicycle upside down. This is especially critical if there is a large amount of water inside. If water freezes inside your frame, the expansion of the ice can crack and rupture the structure.

Before storing your bicycle for an extended period of time, clean and lubricate the frame with a frame wax, polish, or protectant. Do not store the bicycle near electric motors, as ozone from motors destroys paint. Before riding the bicycle again, follow the pre-ride checklist to be certain it is in good working order.

Inspection

Before every ride carefully inspect your frame for signs of fatigue. If any frame part shows signs of damage or fatigue, consult your dealer or replace the frame before riding the bicycle.

⚠ WARNING: An improperly modified frame, fork, or component can cause you to lose control and fall. NEVER MODIFY YOUR FRAMESET.

⚠ WARNING: Attaching incompatible clamping devices to a fork can lead to fork breakage, causing a loss of control. If you are not sure if a device is compatible, consult your dealer

Serial Number

Write it down now! Seriously. It's important if your bike is stolen or for questions about your frame. The number is stamped into the bottom of the bottom bracket shell.

Limited Warranty

This All-City® product is warranted against defects in materials and workmanship for three years from the date of retail purchase of the product, subject to the limitations detailed below. Save your dated receipt for proof of purchase.

This warranty does NOT cover the following:

- Damage due to improper assembly or follow-up maintenance or lack of skill, competence or experience of the user or assembler
- Products that have been modified, neglected, used in competition or for commercial purposes, misused or abused, involved in accidents or anything other than normal use
- Installation of components, parts or accessories not originally intended for or compatible with All-City products
- Damage or deterioration to the paint, surface finish, aesthetics or appearance of the product
- Normal wear and tear
- Labor required to remove and/or refit and re-adjust the product within the bicycle assembly

This limited warranty is expressly limited to the repair or replacement of a defective product, at the option of All-City Cycles, and is the sole remedy of the warranty. This limited warranty applies only to the original purchaser of the All-City product and is not transferrable. This warranty applies only to products purchased through an authorized dealer or distributor. In no event shall All-City Cycles be liable for any loss, inconvenience or damage, whether direct, incidental, consequential, or otherwise resulting from breach of any express or implied warranty or condition, of merchantability, fitness for a particular purpose, or otherwise with respect to our products except as set forth herein. This limited warranty gives the consumer specific legal rights, and those rights and other rights may vary from place to place. This limited warranty does not affect your statutory rights.

TO THE EXTENT NOT PROHIBITED BY LAW, THESE WARRANTIES ARE EXCLUSIVE AND THERE ARE NO OTHER EXPRESS OR IMPLIED WARRANTIES OR CONDITIONS INCLUDING WARRANTIES OR CONDITIONS OF MERCHANTABILITY AND FITNESS FOR A PARTICULAR PURPOSE.

Warranty Process

We will happily back up our products if there is a problem that is our fault. If you and your shop think your All-City product is worthy of a warranty inspection, please return the product to the original place of purchase, accompanied by a sales receipt.

Other Products

Check our website for the full range of All-City bikes, frames, parts and accessories.

Contact Us

Questions, comments, anecdotes, build pics and hipster jokes can and should be directed to:

All-City Cycles
6400 West 105th Street
Minneapolis, MN 55438

Phone: 1.888.4AC.BIKE
Web: www.allcitycycles.com
E-mail: info@allcitycycles.com

