

Thanks for buying the Thunderdome Carbon Track Fork. This 1-1/8" aluminum steerer carbon track fork is designed and intended for use on a Velodrome. When used as intended, we guarantee you'll enjoy this product.

⚠️ WARNING: CYCLING CAN BE DANGEROUS. BICYCLE PRODUCTS SHOULD BE INSTALLED AND SERVICED BY A PROFESSIONAL MECHANIC. NEVER MODIFY YOUR BICYCLE OR ACCESSORIES. READ AND FOLLOW ALL PRODUCT INSTRUCTIONS AND WARNINGS INCLUDING INFORMATION ON THE MANUFACTURER'S WEBSITE. INSPECT YOUR BICYCLE BEFORE EVERY RIDE. ALWAYS WEAR A HELMET.

To download full product instructions and safety information go to www.allcitycycles.com and select the Safety/Tech tab.

1. Stem & Headset Preparation

- Verify that the fork, headset and all required parts for proper assembly have compatible dimensions
The fork, headset, headset spacers and stem steerer clamp must have compatible diameters. Incorrect use of components can cause component failure.

Visit headsetfinder.com to verify fork-to-frame compatibility options. Visit bicycleheadsets.com to learn more about headset fit and the new Standardized Headset Identification System.

- Make sure headset parts that come into contact with the steerer tube are free of burrs or sharp edges. Remove burrs or sharp edges by using very fine grit sandpaper
- Make sure stem parts that come into contact with the steerer tube are free of burrs or sharp edges. Remove burrs or sharp edges with very fine grit sandpaper
- Only use rear slot-style clamping stems. Wedge clamp stem designs must not be used and could result in failure (Figure 1)

2. Fork Preparation

- Avoid scratching or scoring the steerer tube. **Any damage to the steerer tube could cause failure**
- Apply a small amount of grease to the crown race seat. Do not make modifications to the crown race seat of the fork. Only use a headset crown race with the correct inside diameter for your fork steerer tube

Visit headsetfinder.com to verify fork to frame compatibility options.

- Hold one leg of the fork securely while using a crown race installation tool to install the headset crown race

Do not place the fork on the dropout tips or crown while installing the race. Doing so can damage the fork and could cause failure. (Figure 2)

- Assemble the fork, headset and any spacers in the headtube of the bicycle and install the stem (Figure 3)
- **The spacer stack between the headset and stem must not exceed 50mm (Figure 4)**
- Carefully measure and mark the amount of steerer tube to be removed. Remember that, when cut, the top of the steerer tube must be 2–3mm below the top of the headset spacer/stem assembly (Figure 5)
- Remove the fork from the headtube
- **Make certain that you do not cut the steerer tube too short—measure twice, cut once**
- Using a new fine tooth hacksaw blade and proper cutting guide, cut the steerer tube. A pipe-cutter may be used with aluminum steerer tubes
- Using fine grit sand paper, remove burrs and sharp edges

- Using rubbing alcohol, clean the steerer tube and inside of the stem clamp to remove grease and dirt
- Using a star-nut setting tool, install the star nut supplied with your headset into the steerer tube per the headset manufacturer's instructions

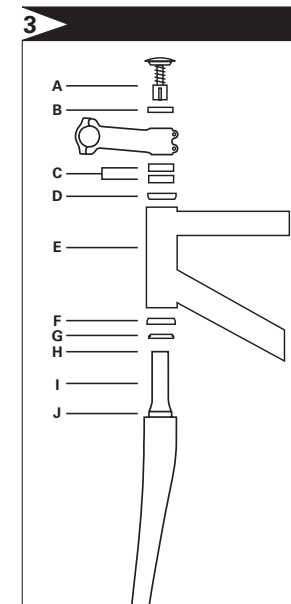
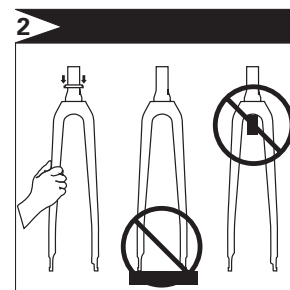
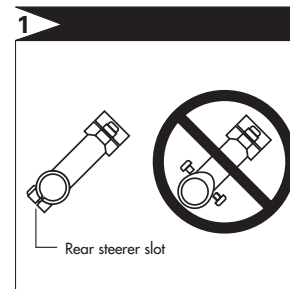
NOTE: The Thunderdome fork has an aluminum steerer with an inner diameter (ID) of 24.6mm. We recommend using a 1" star nut system or a compression plug device that fits this 24.6mm ID.

3. Fork Installation

- Assemble the fork, headset, headset spacers in the headtube of the bicycle and slide on the stem and 10mm spacer. Insert headset compression adjustment device (compression plug) into steerer and adjust headset tension using appropriate tool according to the headset manufacturer's instructions. If torque specifications are not provided, tighten to 1.6Nm (1.5 in-lb)
- Tighten stem steerer clamp bolts to stem manufacturer's recommended torque specifications

⚠️ WARNING: Bikes for use on Velodrome should have a fixed gear rear braking mechanism. For all other street uses, All-City does not recommend riding without front and/or rear braking mechanisms. Please follow brake manufacturer's instructions.

- Only use the front brake nut supplied with the fork to mount the front brake
- Install the front brake following the brake manufacturer's instructions



- A - Compression device or 1" star nut system
- B - 10mm spacer
- C - Spacers (50mm max)
- D - Upper headset
- E - Headtube
- F - Lower headset
- G - Fork crown race
- H - Top of steerer tube
- I - Fork steerer tube
- J - Crown race seat

- Follow the wheel manufacturer's instructions for correct clamping of the wheel quick release and install the front wheel. **Failure to properly adjust the quick release and secure the wheel can result in serious injury or death**

- Adjust the front brake following the brake manufacturer's instructions. **Failure to properly install and adjust brakes can result in serious injury or death**

4. Fork Mount Bicycle Racks

- When using a fork-mount (axle dropout-clamping) bicycle rack, always ensure the clamp is closed securely to prevent dropout and/or bike damage. If the clamp is set too loosely the bike can fall out of the rack
- When removing the fork from the clamping device make sure to pull/push straight up allowing the dropouts to be removed evenly and at the same time. Do not tilt the bike to remove it from the clamping device, as dropout damage can result (Figure 6)

Dropout damage can cause component failure, which can result in serious injury or death.

5. Ongoing Maintenance

- Do not modify the fork, other than cutting the steerer tube to the correct length for your bicycle
Modifying the fork could cause fork or other component failure resulting in serious injury or death
- Loosen the stem's steerer clamp bolts before making any stem-to-fork alignment adjustments
- Periodically remove, clean and inspect your fork for damage, cracks or any other damage. Any questions about marks or cracks on the fork should be directed to your All-City dealer immediately
- Regularly inspect all components for any damage (cracks, chips, etc.) and replace components upon detection
- In the event of a crash or impact, carefully inspect handlebars, fork, stem, seatpost, wheels and the frame for any visible damage. As with any component under varying degrees of stress there is a fatigue life that is proportional to the type of use and abuse applied to the part. Always inspect your components before a ride. If you have doubts about the integrity and condition of any part, replace it. Consult your dealer if you are unsure about the condition of your components or any part of your bicycle

Limited Warranty

This All-City® product is warranted against defects in materials and workmanship for three years from the date of retail purchase of the product, subject to the limitations detailed below. **Save your dated receipt.** This limited warranty is expressly limited to the repair or replacement of the original product, at the option of All-City, and is the sole remedy of the warranty. This limited warranty applies only to the original purchaser of the All-City product and is not transferable. In no event shall All-City be liable for any loss, inconvenience or damage, whether direct, incidental or consequential or otherwise resulting from breach of any express or implied warranty or condition, of merchantability, fitness for a particular purpose, or otherwise with respect to this product except as set forth herein. This warranty only applies to All-City branded product. Any other original part or component shall be covered by the stated warranty of the original manufacturer.

TO THE EXTENT NOT PROHIBITED BY LAW, THIS WARRANTY IS EXCLUSIVE AND THERE ARE NO OTHER EXPRESS OR IMPLIED WARRANTIES OR CONDITIONS OF MERCHANTABILITY AND FITNESS FOR A PARTICULAR PURPOSE.

This warranty does not cover the following:

- Damage due to improper assembly or follow-up maintenance or lack of skill, competence or experience of the user or assembler

- Products that have been modified, neglected, used in competition or for commercial purposes, misused or abused, involved in accidents or anything other than normal use
- Damage or deterioration to the surface finish, aesthetics or appearance of the product
- Normal wear and tear
- Labor required to remove and/or refit and re-adjust the product within the bicycle assembly

Other Products

Check our website for the full range of All-City bikes, frames, parts and accessories.

Contact Us

Questions, comments, anecdotes, build pics and hipster jokes can and should be directed to:

All-City Cycles
6400 West 105th Street
Minneapolis, MN 55438

Phone: 1.888.4AC.BIKE
Web: www.allcitycycles.com
E-mail: info@allcitycycles.com

